

LINESET COVER KITS

Submittal Information

Part No	18481W-18482W
Document No.	SPEC18481W
Date	2025-02-28
Revision	01

General Properties

Material:	PVC
Color:	White (Paintable)
Mounting:	Screw-in installation with interlocking cover sections

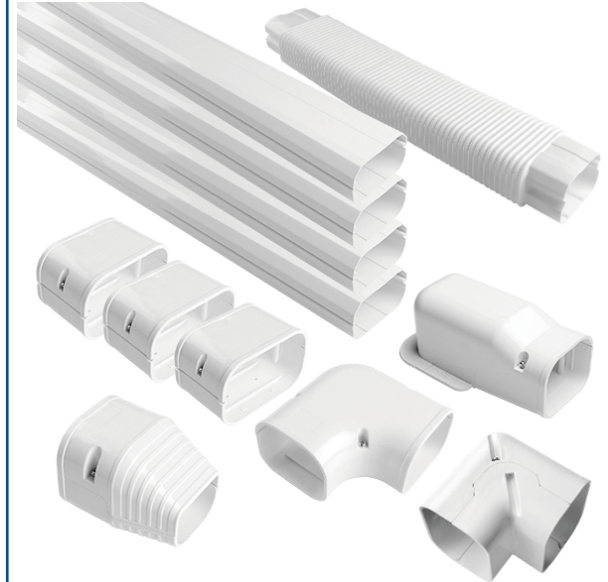
Specification

Item No.	Specifications	Capacity Range (BTU)	U/M	Std. Pkg.
18481W	3" LINESET COVER 16 FT KIT, WHITE	9000-27000	KT	1
Including Components				
Item No.	Specifications	Qty		
18401W	3"X4' LINESET COVER, WHITE	4		
18405W	3" 90° FLAT ELBOW, WHITE	1		
18414W	3" 90° VERTICAL ELBOW, WHITE	1		
18420W	3" COUPLER, WHITE	3		
18425W	3" WALL INLET, WHITE	1		
18434W	3" LINESET COVER END FITTING, WHITE	1		
18443W	3" LINESET COVER FLEX CHANNEL, WHITE	1		

Item No.	Specifications	Capacity Range (BTU)	U/M	Std. Pkg.
18482W	4" LINESET COVER 16 FT KIT, WHITE	27000-54000	KT	1
Including Components				
Item No.	Specifications	Qty		
18402W	4"X4' LINESET COVER, WHITE	4		
18406W	4" 90° FLAT ELBOW, WHITE	1		
18415W	4" 90° VERTICAL ELBOW, WHITE	1		
18421W	4" COUPLER, WHITE	3		
18426W	4" WALL INLET, WHITE	1		
18435W	4" LINESET COVER END FITTING, WHITE	1		
18444W	4" LINESET COVER FLEX CHANNEL, WHITE	1		

Features

- Designed to conceal line sets, drain lines, and control cables when in-wall installation is not possible.
- Made from high-quality PVC, resistant to weather conditions, UV rays, and physical impact.
- Paintable white appearance.
- Easy installation for any existing or new setup.
- Provides up to 18'.



- Including:
- 4' Lineset Covers * 4
 - 2' Flex Channel * 1
 - 90° Flat Elbow * 1
 - 90° Vertical Elbow * 1
 - Couplers * 3
 - Wall Inlet * 1
 - End Fitting * 1

Installation Instructions

1. Preparation: Ensure that the refrigerant lines and wiring are properly secured before installation.
2. Positioning: Align the back portion of the duct against the wall, making sure it covers the entire piping system.
3. Securing: Drill appropriate screws (not included) through the pre-drilled screw holes to attach the base to the wall.
4. Assembly: Place the piping along the center of the duct and snap the front cover onto the back portion.
5. Final Securing: Fasten the duct with one screw for every 20" to ensure a stable and secure fit.
6. Optional Customization: If desired, paint the PVC cover to match the surrounding area.